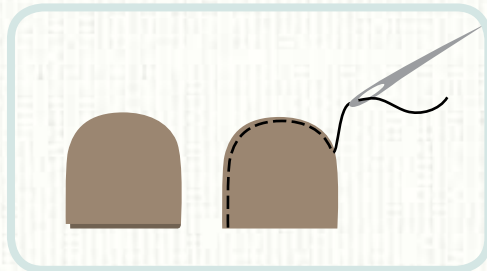
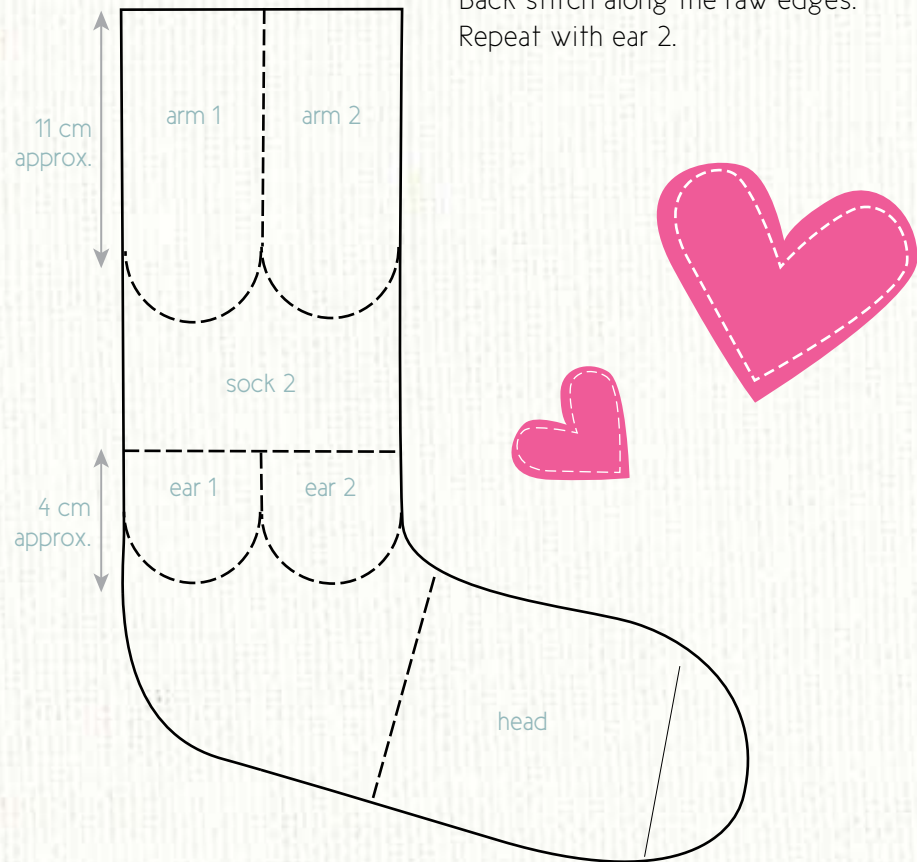
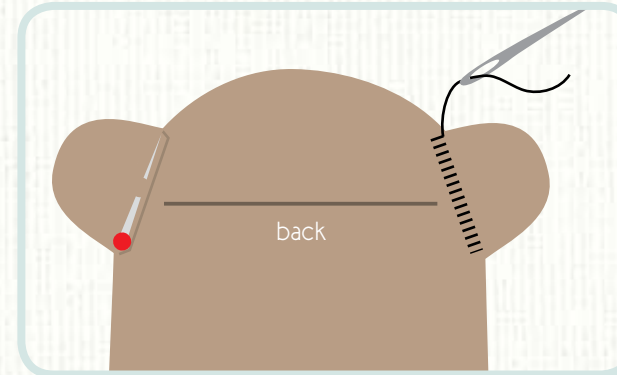




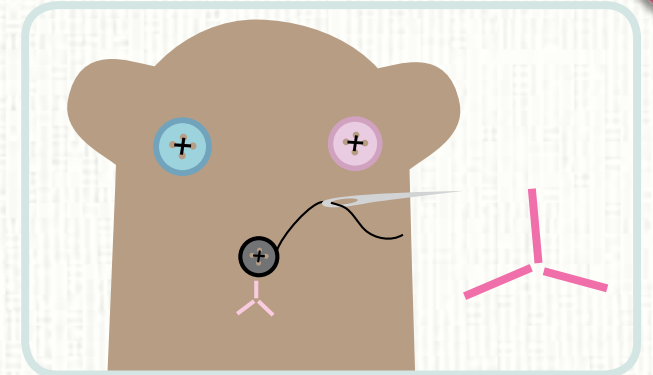
cut along the dotted lines



**6** Turn ear piece 1 inside out. Fold. Back stitch along the raw edges. Repeat with ear 2.

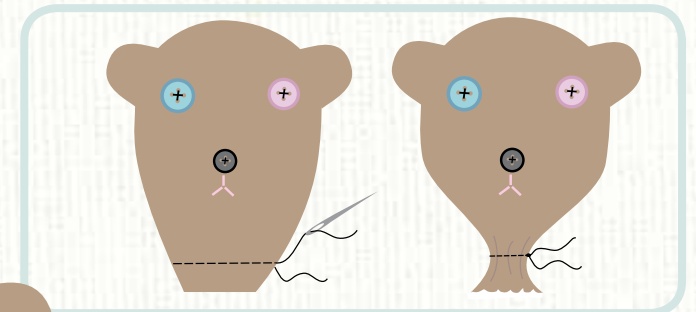


**7** Turn the ears right-side out. Fold raw edges to inside. Pin the ears to the head piece. Whip stitch onto the back of the head.



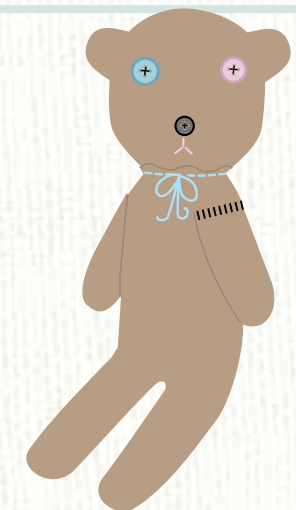
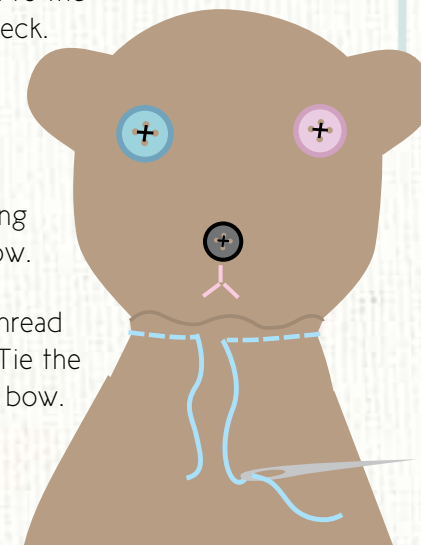
**8** Fill the head with stuffing. Stitch the eyes and nose into place. Stitch 3 small stitches for a mouth.

**9** Sew long straight stitches around the neck. Pull the ends of the thread and tie together.



**10** Stuff the head into the body. Pin the head to the body around the neck. Stitch a long straight line around grizzly bear's neck. Leave the thread ends long enough to tie a bow.

**11** Pull on both thread ends and tighten. Tie the thread ends into a bow.



'grrr!' to you too, grizzly